



VTL

TP2.5 Series II Phono Preamplifier

Owner's Manual

MAKING TUBES USER FRIENDLY

VTL TP2.5 II Phono Preamplifier

Information in this document is subject to change without notice. No part of this document may be reproduced or transmitted in any form or by any means, electronic or mechanical, for any purpose, without the express written permission by VTL.

Version History:

Version 2.1 January 29, 2013

Part Number: OM-0495

Copyright © 2013 by VTL Amplifiers Inc. All rights reserved.
4774 Murrieta Street, Suite 10
Chino, CA 91710, USA
Phone 909.627.5944 • Fax 909.627.6988
email: mail@vtl.com • <http://www.vtl.com/>

Table of Contents

CHAPTER 1	1
INTRODUCTION	1
<i>Symbol Conventions used in this guide</i>	1
<i>Electrical Safety Notice</i>	1
<i>Water and Moisture</i>	2
<i>Location and Ventilation</i>	2
<i>Warning – To avoid risk of failure due to overheating, do not stack components</i>	2
<i>Servicing</i>	3
<i>Operational Warnings</i>	3
CHAPTER 2	4
GETTING STARTED	4
<i>TP 2.5 Front Panel Controls</i>	4
<i>The Preamplifier’s Back Panel</i>	5
<i>Connecting Your Phono Preamplifier to your system</i>	5
<i>Powering the system off</i>	7
CHAPTER 3	8
CONFIGURING THE PHONO PREAMPLIFIER FOR MM OR MC	8
CHAPTER 4	13
CARE AND MAINTENANCE OF YOUR VTL PREAMPLIFIER	13
BREAK IN PERIOD	13
<i>Changing Tubes</i>	13
<i>Changing the Main Fuse</i>	15
<i>Cleaning</i>	16
<i>Troubleshooting</i>	16
CHAPTER 5	18
SPECIFICATIONS	18
CHAPTER 6	19
WARRANTY.....	19
APPENDIX	21
<i>Warranty Registration</i>	21
<i>Service Notes</i>	21

Introduction

Congratulations on your purchase of a VTL pure tube phono preamplifier.

This hand crafted equipment is designed to deliver superb performance for your listening pleasure for many years to come. Please take a moment to read through this owner's manual. You will get an idea of the installation procedures needed to connect this preamplifier to the rest of your audio system, as well as the various functions this preamplifier can perform. Please take enough time to get familiar with the features of this product. After you have finished reading this manual please keep it in a safe place for future reference.

The VTL team is proud that you have selected our TP2.5 phono preamplifier as a new member of your home audio system. This preamplifier is designed to give you the convenience and flexibility to manage your analog input while at the same time giving you the musical experience that is the most alive and the truest to your source, and we hope you'll get many hours of enjoyment from it.

Symbol Conventions used in this guide

Certain symbols are used in this owner's manual to draw your attention to important points being discussed. For your own safety and that of your equipment you should note and heed the warnings that follow these symbols.

The "Warning - Pay particular Attention" symbol used is



And the "Warning - Observe These Precautions for Your Safety" is



Electrical Safety Notice

Electrical voltage from power cables can be hazardous. We recommend that the power cord used with this unit be connected to a properly grounded AC outlet. There are hazardous voltages present in the unit, and to prevent electrical shock, do not remove the cover of this preamplifier, and under no circumstances while the unit is powered on.



Warning – Under no circumstances should any attempt be made to circumvent the ground system to the AC line for any reason. Using a ground lifted system can be potentially extremely dangerous, both to persons that might come in contact with the unit, and to the unit itself, and proper RF shielding cannot be attained without a secure ground connection.



Damage to the unit that is the result of improper AC connection and grounding will not be covered under the warranty.

Prior to connecting this preamplifier to any audio or video equipment in your system, make sure this unit's power (and the rest of the equipment connected to its input and output channels) is turned off. Adding or removing input or output cables to the preamplifier while the system is powered on can cause damage to the preamplifier and possibly also to the rest of the system.



Water and Moisture

The TP-2.5 should be kept away from sources of water or moisture. If liquid enters the unit it must be immediately returned to your dealer for servicing. In this case you should under no circumstances try to power the unit on - there are hazardous voltages present in this unit that can cause serious injury if they come in contact with you.



Location and Ventilation

Warning – To avoid risk of failure due to overheating, do not stack components

The TP-2.5 chassis emits heat and needs proper ventilation to ensure long operational life. Under no circumstances should the TP-2.5 be stacked on top of or below any other unit.

Ensure that the TP-2.5 is installed in a location that is stable and well ventilated. If the preamplifier is placed in a built-in installation, ensure that there is adequate room for air to flow through the ventilation openings. Allow at least 3 - 5 inches clearance on the top and around the sides of each chassis of the preamplifier. The warranty does not cover units that are damaged due to overheating from incorrect installation.



It is also recommended that the TP-2.5 be sited at least 3 feet away from the power amplifier to prevent possible noise introduction into the system.

Tiptoes or other isolation accessories may prove useful in reducing mechanical vibrations or other external vibrations that might affect sonic performance, and we have found that such accessories can offer definite beneficial sonic improvements when used correctly. In all cases this preamplifier should only be installed in a location that is stable, as warranty does not cover damage due to the unit falling.

Do not place the TP-2.5 next to heat sources such as radiators, stoves or other appliances.

Do not place the TP-2.5 where small children might be able to tamper with the equipment. If it is not possible to place the preamplifier out of the reach of small children it is recommended that power cables be removed when the equipment is not in use.

Servicing



Do not attempt to service the TP-2.5 beyond the procedures described in this manual. For all other service and questions, please contact your authorized VTL dealer or the factory.

Operational Warnings

→ It is critical for proper sonic performance of this component that it be properly configured for the mode of operation while playing.



→ Always make all connections before powering the TP-2.5 on. Connecting or disconnecting the TP-2.5 while powered on can damage the unit, and will not be covered under the warranty. Ensure that no interconnect cables can become loose during use and that there are no intermittent faults or shorts with the cables.



→ Do not attempt to disassemble the TP-2.5 chassis or remove any covers from the unit. Always consult with your VTL authorized dealer or the VTL factory before attempting any service work on any VTL unit.



→ Do not touch the tubes after the TP-2.5 is turned on. The tubes can get very hot while the TP-2.5 is operating. Turn off the TP-2.5 and allow the tubes to cool down before attempting to work with the tubes.



→ Do not exceed fuse ratings or attempt to bypass any fuses, as this can cause an extremely hazardous condition and will void any warranties. Use only the same type and rating of fuses as specified in the owners' manual and marked on the unit.



→ Do not put shorting plugs into the input jack that is not being used. For example, if you are using the preamp in MC stage, do not plug the MM input jack.



Getting Started

After you open the carton you should find the following items inside:

- The preamplifier, with a power cord
- This User Manual, VTL Quality Assurance test document, VTL product warranty registration card

Remove each item from its packaging material and check to make sure that no physical damage has occurred during shipping of the unit. There should be no rattles inside the preamplifier. Look through the vent slots and check to see that the tubes appear properly seated firmly in their sockets. Contact your VTL dealer immediately if physical damage is detected.

TP 2.5 Front Panel Controls



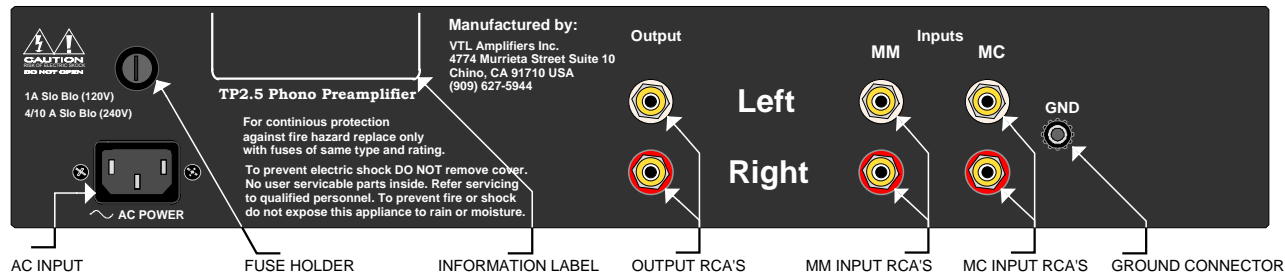
You can operate the switches from the front panel to control the power on/off, mute and rumble functions. The Status indication LED shows whether the unit is on or in mute.

- ➔ The *Status* LED indicates the power on status of the preamplifier. When the unit is powered on, the LED light will first blink to indicate the preamplifier is in mute, and then after 30 seconds, the blinking will go away. The Status light continues to stay on to indicate that the system is in the “ready” state.

- ➔ The *Status toggle* switch is a 3-position toggle switch to allow you to switch the phono preamplifier between operating mode, the mute state and Rumble on state. When the toggle switch is in the middle position, the preamplifier is in its operating state. Change the preamplifier to the mute state by pressing the switch down. If the preamplifier is currently in mute state, press this switch up to change the system back into the operating state.
- ➔ When the status switch is in the up position, the *Rumble* feature is selected.
- ➔ The *Status LED* indicates whether the preamplifier is in operating state or in muted state. When the LED light is on, the preamplifier is in operating state. When the LED light is on and flashing, the preamplifier is in mute state. The LED is off when the preamplifier is powered off.
- ➔ The *Power On/Off* switch can be used to turn the preamplifier on and off. Press the switch up to turn the preamplifier ON and press the switch down to turn the unit OFF. The *Status LED* should be on and off respectively, according to the setting of the *Power On* switch.

The Preamplifier's Back Panel

From the Preamplifier's back panel, you can access the input, output, ground and power connectors, the main fuse holder, the serial number, and the voltage setting of the unit.



Connecting Your Phono Preamplifier to your system

1. Connect the turntable to the TP2.5 preamplifier. Make sure that the preamplifier and the turntable is powered off. Connect the output cable from the turntable to either the *MM* or *MC Input* connectors of the TP2.5 preamplifier,

according to the type of phono cartridge that you are using. Please consult the manufacturer of your phono cartridge if you are not sure whether your cartridge is a moving magnet (MM) or moving coil (MC) cartridge. The TP2.5 phono preamplifier uses single-ended (RCA) connectors for inputs. If your phono cable does not come with a male RCA connector, please consult the manufacturer of the turntable or tone arm to see if a converter can be provided to adapt the cable to a single-ended input. Check and make sure that the left and right channels of the phono cable are connected to the corresponding left and right input channels of the preamplifier. Loosen the *Ground* connector next to the MM and MC input jacks and insert the ground wire from the turntable to the *Ground* connector. Be sure to tighten the *Ground* connector and make sure that it makes a firm contact with the wire.

➔ **Do not put shorting plugs into the input jack that is not being used. For example, if you are using the preamp in MC stage, do not plug the MM input jack.**

2. Connect the line stage preamplifier to the output channels of the TP2.5. Using a pair of the output cables, connect the left and right output channels from the TP2.5 phono preamplifier to the input connectors of your line stage preamplifier or integrated amplifier. Make sure that the left and right output channels from the TP2.5 are connected to the left and right input channels of your line stage preamplifier. If you are using the VTL TP2.5 preamplifier, you can connect the outputs from the TP2.5 to the Phono/Aux inputs of the TP2.5. If you are using the VTL IT-85 Integrated Amplifier, you can connect the outputs from the TP2.5 to the Aux inputs of the IT-85.
3. Connect the power amplifier to the output channel of the preamplifier. If you are using the TP2.5 with a line stage preamplifier and an amplifier, make sure that the line stage preamplifier is connected to the amplifier
4. Connect the speakers to the amplifier. Connect the left and right speaker cables from your loudspeakers to the inputs of your amplifier.

Powering your system on

After you have properly connected your system according to the steps above you are ready to power your system on.

1. If you haven't already done so, ensure that all the tubes inside the VTL preamplifier are properly seated all the way into their sockets before connecting the unit to an AC source.
2. Power on the source component(s) you intend to use for your listening session.

3. From the TP2.5 phono preamplifier's front panel Power On switch turn on the preamplifier. Check to make sure that the Status LED indicates preamplifier warm up mode, as indicated by the flashing Status LED. Check the position of the mute switch on the TP2.5's front panel. If the mute switch is in the down position, the TP2.5 will stay muted after it is powered on until you set the switch to the middle position to take it out of mute state. We recommend that you put the TP2.5 in the mute state until you are ready to play your record and set your volume level appropriately.
4. Once the preamplifier completes its warm up cycle and if the TP2.5 is in the operating mode (mute switch up) the Status LED will stop flashing to indicate that it has returned from the mute state into the operating state. In case the Status LED do not behave as described above check to make sure that the power cable is securely connected to the AC Power connector in the back panel of the preamplifier, and that the power cable is plugged into the AC supply. Contact your VTL dealer if the unit still will not power up after these checks have been performed.
5. Turn on the line stage preamplifier followed by the power amplifier. Alternatively if you are using an integrated amplifier only, turn on the integrated amplifier.
6. Put on your favorite record and get ready for some good music.
7. Change the TP2.5 to its operating mode if it is in mute and adjust the volume on your line stage or integrated amplifier to the appropriate playing level.

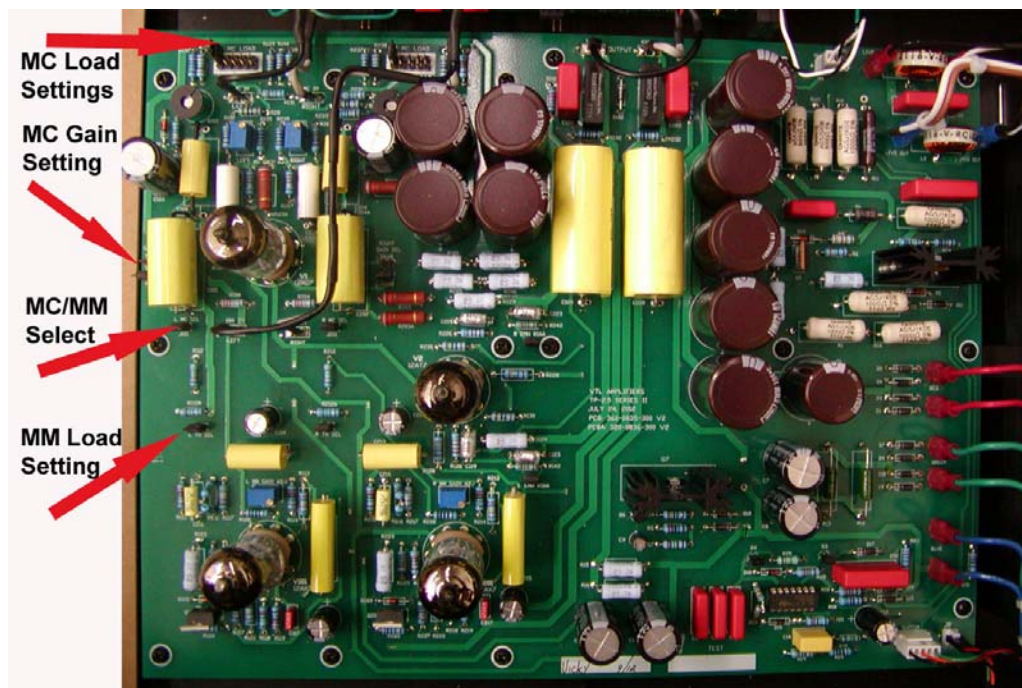
Powering the system off

1. When you're done listening to your system always turn your power amplifier(s) off first. Allow a short time (15 - 20 seconds) for the amplifier(s) to power down after you turn them off.
2. Then turn the line stage preamplifier volume down. This is a precaution to avoid a sudden surge in your system the next time you turn it on.
3. Turn the TP2.5 preamplifier and source components off, if you prefer to keep these off when not in use. (You may keep your VTL preamplifier and your source components on permanently if you prefer to keep them warm.)

Configuring the Phono Preamplifier for MM or MC

The VTL factory standardly configures the TP2.5 phono preamplifier to work with a MC (moving coil) cartridge. If you would like to alter the standard setting, please follow the instructions below or contact your dealer for assistance.

WARNING: DO NOT TOUCH ANY COMPONENTS INSIDE THE PREAMPLIFIER (OTHER THAN THE PARTS MENTIONED BELOW) EITHER WITH YOUR FINGERS OR WITH ANY METALLIC OBJECT,



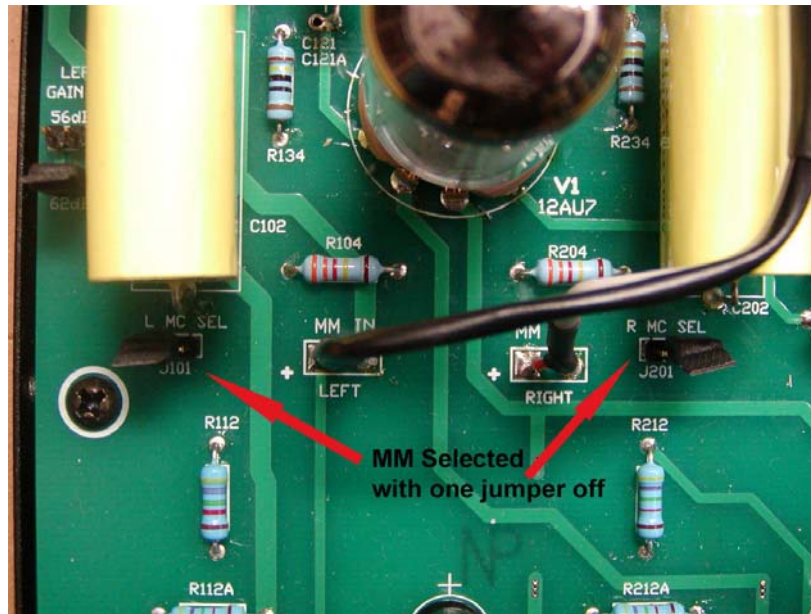
TP2.5 Internal Jumpers for MC/MM Selection

1. **Remove the top cover of the TP2.5:**

You must turn off the TP2.5 preamplifier and remove the power cord. Use a #2 Phillips screw driver and remove the 6 screws on the top and 3 screws on each side of the preamplifier. Keep the screws in a safe place so that you can put the cover back onto the unit when you have completed the following operation.

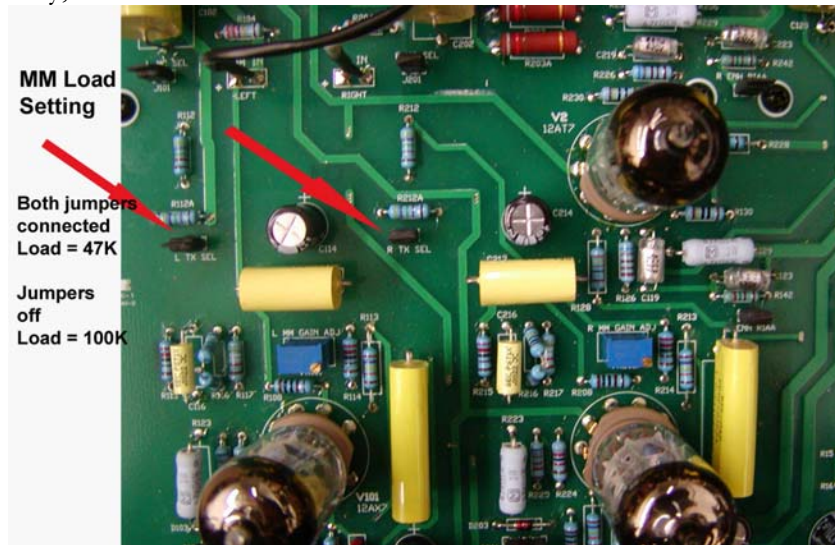
2. Selecting MM setting:

Locate the jumpers L MC SEL (J101) and R MC SEL (J201): These are two small black jumpers located on the TP2.5 PC board on the left hand side of the board marked JP101 and JP201. To set the preamplifier for MM cartridges, lift the black pin jumper and connect the jumper a single pin of the header. Do this for both jumpers (one per channel) in locations JP101 and JP201.



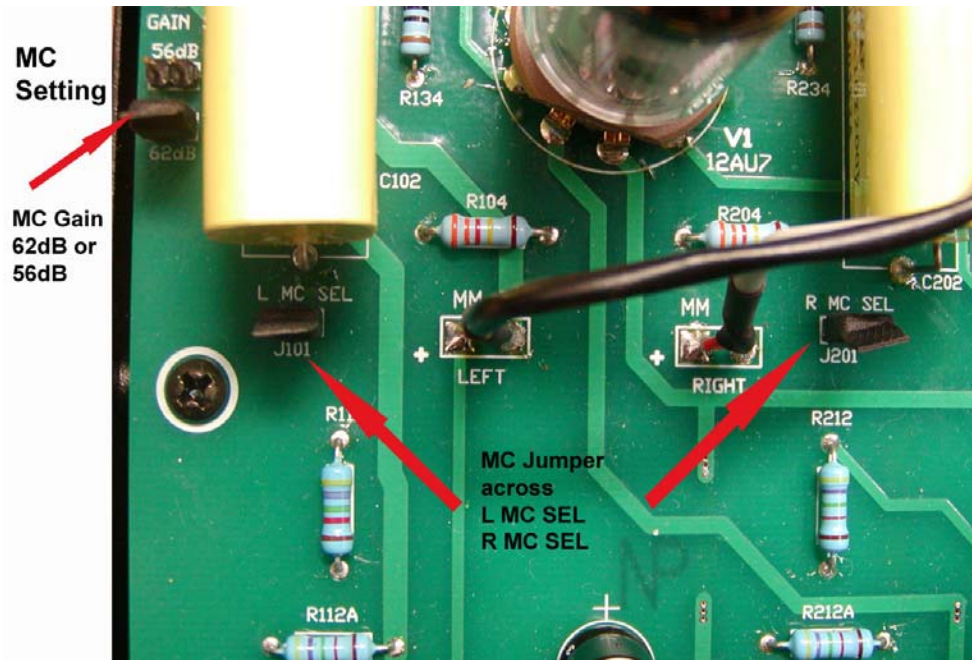
3. Selecting MM load:

Locate the MM load positions marked L TX SEL and R TX SEL. You can select the Load for either 47K or 100K. When the jumper is connected across both pins, the load is set to 47K. When the jumper is connected to one pin only, the load is set to 100K.



4. Selecting MC setting:

Locate the jumpers L MC SEL (J101) and R MC SEL (J201). There are two small black jumpers located on the TP2.5 PC board on the left hand side of the board marked JP101 and JP201. To set the preamplifier for MC cartridges, connect the jumpers across both pins of the headers.



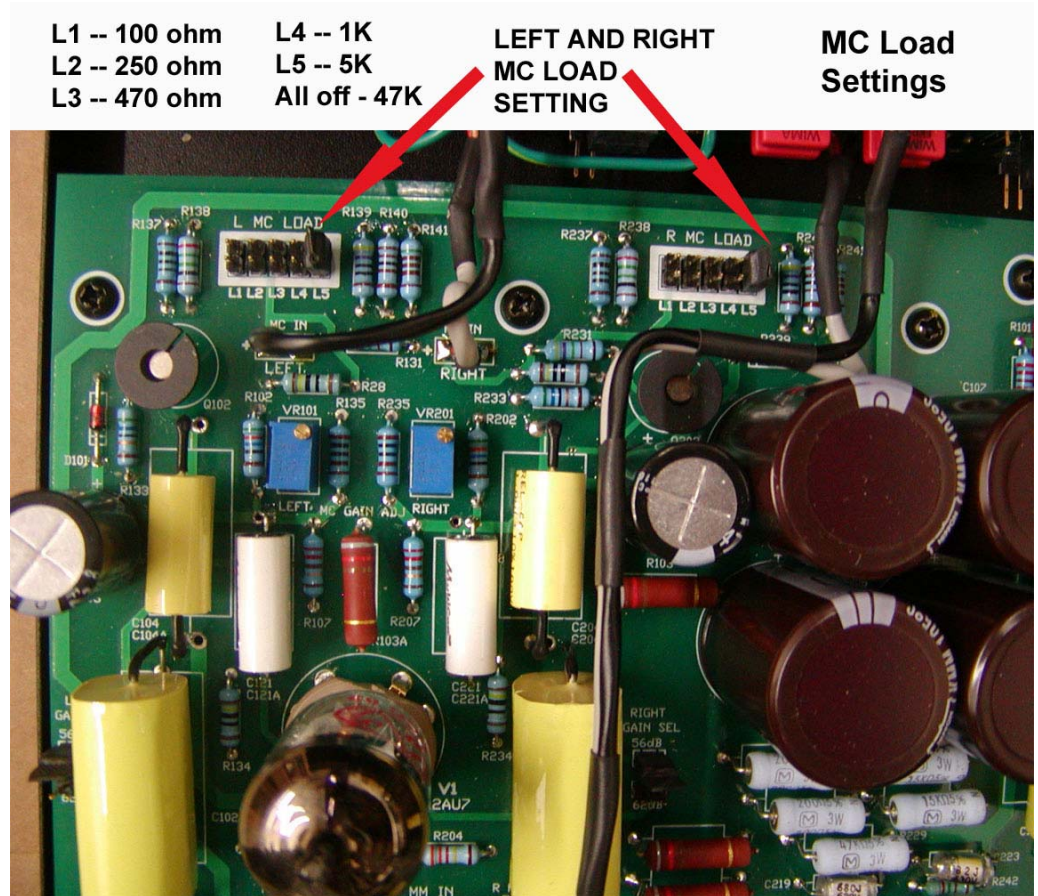
5. Selecting MC Gain:

Locate the MC Gain jumpers L GAIN SEL and R GAIN SEL. Place the header across either the 62 dB or 56 dB headers for each channel.



6. Selecting MC Load:

Locate the MC Load jumpers across the top edge of the PC board in the locations labeled L MC LOAD and R MC LOAD. Note that there are five 2 pin headers, L1 to L5, to set the load option. Place the jumper across one of the 5 sets of pins to select the appropriate Load option.



As noted in the photo above, the MC load options are as follows:

- 100 ohm – header across L1
- 250 ohm – header across L2
- 470 ohm – header across L3
- 1K – header across L4
- 5K – header across L5
- 47K – header off and not connected (you can put the header across one single pin in both channels)

7. Enhanced and standard RIAA

Locate the Enhanced RIAA jumpers on the PC board in the locations R ENH RIAA and L ENH RIAA. Place the jumper across both pins of this header to select standard RIAA.

Care and Maintenance of your VTL preamplifier

Break In Period

Your VTL phono preamplifier is a pure tube product designed to give you the continued optimum performance over a long time period. Initially the tubes and circuits will require a burn-in period to reach maximum performance. During the first 100 hours of usage the preamplifier will undergo several improvements in sound.

Tube Life

Your VTL preamplifier has been designed to ensure long tube life. Tube replacement need not be considered until after approximately 2000 hours of use (roughly 2 to 3 years depending on your listening requirements.) As the tubes age beyond their peak performance there will be a general softening of the sound.

We recommend a complete replacement of all tubes in your preamplifier at that time, which will restore it to a “like new” sound quality. Your VTL dealer or VTL factory service department will be happy to assist you with the re-tubing process.

Note: use only tube types and tube brands that are recommended by VTL. VTL specified replacement tubes are available from your authorized VTL dealer or the VTL factory service department. Any damage incurred to units which use non-VTL approved tubes will not be covered under the warranty.

Changing Tubes

Do not attempt to change tubes yourself unless you feel confident that you can do so safely. Contact your authorized VTL dealer or the VTL factory service department if you would like the service to be performed by a trained technician.

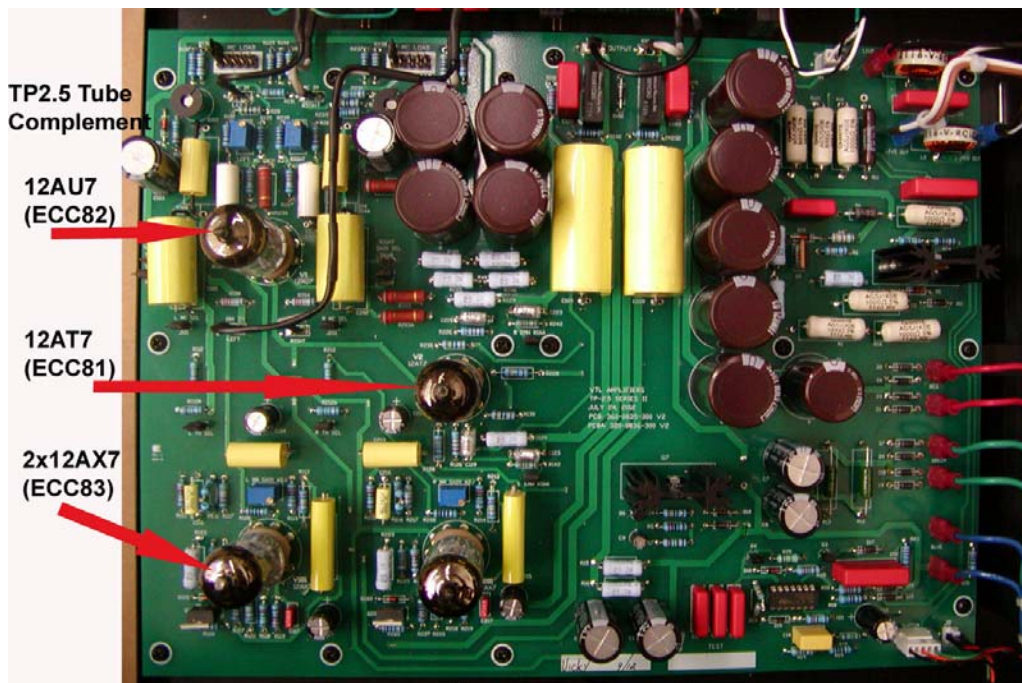
To change tubes in your preamplifier you must first turn the power **off** on the preamplifier, **unplug** the unit from the wall outlet and disconnect the preamplifier from the rest of your system. Using a Philips Star screw driver remove the cover chassis from the unit by loosening the screws from each side of the preamplifier and

the screws from the top along the front and back edge. Carefully remove the cover and the screws and store them in a safe place.

When you look down from the top, you will see a printed circuit board mounted inside the preamplifier. **WARNING: DO NOT TOUCH ANYTHING INSIDE THE PREAMPLIFIER, EITHER WITH YOUR FINGERS OR WITH ANY METALLIC OBJECT, UNTIL AFTER THE UNIT HAS BEEN SAFELY DISCHARGED.** The VTL preamplifiers can store energy in the power supplies long after they have been turned off, and incorrectly discharging the unit can damage the circuits, which will NOT be covered under the warranty. Be sure to understand these constraints before going any further. If at this stage you feel that you would rather not attempt this procedure yourself you can take the unit to your VTL Authorized Dealer to have the work done.

If you feel comfortable with undertaking the procedure yourself then be sure to only touch the tubes themselves, and do not allow any part of your body or hanging jewelry to come into contact with any part of the circuit inside the unit.

Locate the four tubes which are plugged into sockets on the PC board. There are a total of four tubes, one 12A17 tube (V2), two 12AX7 tubes (V101, V201) and one 12AU7 tube (V1). The following drawing indicates the location of the tube type with respect to the sockets, looking from above and in front of the unit.

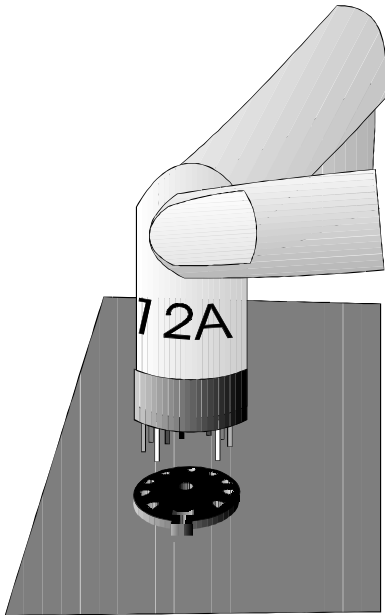


Removing Tubes

Locate the tube you need to remove and hold onto the upper portion of the tube towards its tip. Gently rotate and rock the tube with your fingers to loosen it from its socket until its pins are completely disengaged from the socket. Take the tube out of the unit.

Plugging in a new tube

Consult the figure above to make sure that you are inserting the correct tube type into the correct socket. Hold onto the upper portion of the tube towards its tip. Lower the tube onto the socket, making sure that the pins from the tube matches the holes in the socket. There are two pins on the tube that are spaced at a wider distance from each other than the rest of the pins. Make sure that these two pins go into the side of the socket that matches that distance. Press the tube firmly into its socket, using a gentle force and a slight “rocking” motion. When the tube is properly and completely inserted into the socket it should be firmly implanted and does not give in to any movement at all when you try to rock it.



After you're satisfied with all the changes you made inside the preamplifier box you are ready to put the unit back together.

Replacing the chassis cover

Lower the preamplifier's cover chassis slowly back into the opened preamplifier box, making sure that the cover is put on in the correct front and back position. Locate the screws that were removed from the cover and put them back on the cover. Tighten all screws to make sure that the cover is securely put back to the unit.

Changing the Main Fuse

The primary mains fuse for your preamplifier is rated 1A Slo Blo (120Volt AC) or .40 A Slo Blo (240 Volt AC). The mains fuse is housed in a holder located on the back panel of the unit. To change the fuse, make sure the unit is powered off. Disconnect the AC power cord from the unit. Move the preamplifier so that you can work with the panel in the back. Locate the mains fuse holder and use a flat blade screw driver to

remove the cap from the fuse holder.. The fuse cap should come out from its housing with the fuse held inside the cap. Take the fuse out and replace it with a new one.

WARNING: For continued protection against fire hazard only replace the fuse with the same type and rating as was originally specified for the preamplifier. If you have problems locating the correct fuse contact your VTL dealer or the VTL factory service department.

Cleaning

Your VTL preamplifier should be dusted occasionally with a damp non-abrasive cloth. You should not use any solvents for cleaning the front panel, as this can damage the lettering and the finish.

Troubleshooting

1. When I power on the preamplifier, Status LED does not come on and nothing else happens. What should I do?

Check to make sure that the power cord is properly connected to the preamplifier and the AC outlet. If there is no problem with the power source, check the fuse unit in the back panel of the preamplifier. If the fuse is blown, change the fuse. Turn the power on the preamplifier again. If the problem still persists, contact your authorized VTL dealer immediately.

3. I am getting a noise and hum coming from my system when I turn the system on. What can I do to eliminate the noise?

It is recommended that you connect as many components as possible to a good clean AC ground in your system for optimum noise reduction and safest operation. If however there are too many paths to ground then a ground loop hum can result, and you should either contact your dealer or the VTL factory to try to resolve this problem.

5. I am getting a ringing noise from the preamplifier when I touch or bump it. What should I do?

One or more of the tubes in the preamplifier may be the source of the problem. Follow the procedures listed in this manual to remove the tubes and change them for new ones.

6. I am getting a popping noise or intermittent noise from the preamplifier. What should I do?

One or more of the tubes in the preamplifier may be the source of the problem. Follow the procedures listed in this manual to remove the tubes and change them for new ones.

Specifications

TP2.5 Series II Phono Preamplifier

Vacuum Tube Complement	1x12AT7 2x12AX7(MM) 1x12AU7(MC)
T.H.D. 20 Hz - 20 KHz	0.1% 1KHz
Signal to Noise Ratio	-56 dB (MM) -50 dB (MC)
Maximum Output Voltage	20 Volts
Gain	42 dB (MM) 56 dB, 62 dB (MC)
Load	47K Ohms, 100K Ohm (MM) 100 ohm, 250 ohm, 470 ohm, 1K, 5K, 47K ohm (MC)
Power Consumption	25 Watts
Primary Mains Fuse Rating	1A Slo Blo Ceramic (120Volt AC) .41 A Slo Blo Ceramic (240 Volt AC)
Dimensions	19" wide x 15" deep x 4" high 48.25 x 35.5 x 9.5 cm
Weight	25 lbs (11.34 Kg) packed

Warranty

Warranty registration for VTL products is valid in the USA only. International VTL customers should consult the local VTL importer regarding product registration and warranty procedures.

VTL amplifiers and preamplifiers are covered by a limited warranty against defects in materials and workmanship for a period of 90 days from date of purchase by the original purchaser only, solely when purchased from an authorized VTL dealer. The warranty period begins on date of first sale to the end user, or one year after shipment from the VTL factory, whichever is the earlier. A further optional limited non-transferable five-year warranty is available to the original purchaser only upon proper registration of ownership within 30 days of date of first purchase.

In order to ensure the highest level of customer satisfaction, "new" VTL products may only be purchased over-the-counter or delivered and installed by an Authorized VTL Dealer. VTL products that are purchased over the Internet, by phone or mail order are presumed to be "used" and do not qualify for any VTL Warranty.

Proper registration is made by filling out and returning to the factory the original warranty card packed with the unit, along with a copy of the original sales receipt as proof of the original date of purchase, within 30 days of purchase.

The warranty is provided by the dealer where the unit was purchased, and by VTL Amplifiers Inc. Under the terms of the warranty defective parts will be repaired or replaced without charge, excepting the cost of tubes. A six-month warranty on tubes is available with the correct recording of the serial number of the VTL preamplifier on the warranty registration card and mailing it with the purchase receipt to VTL.

If a VTL product fails to perform properly under the above warranty then the purchaser's sole remedy shall be to return the product to the authorized VTL dealer or to VTL Amplifiers Inc, where the defect will be repaired without charge for parts and labor. The product will then be returned via prepaid, insured freight, method and carrier to be determined solely by VTL Amplifiers Inc. All returns to the factory must be in the original packing and accompanied by a Return Authorization, (new packing will be supplied for a nominal charge if needed), accompanied by a written description of the defect. This must be shipped to VTL Amplifiers Inc via insured freight at the customer's own expense. Charges for unauthorized service and transportation costs are not reimbursable under this warranty, and all warranties, express or implied, become null and void where the product has been damaged by misuse, accident, neglect, modification, tampering or unauthorized alteration by anyone other than

VTL Amplifiers Inc. VTL does not warrant, in any way, products that are purchased from anyone who is not an Authorized Dealer or that have had their serial number altered or defaced.

This warranty applies only to units used in residential non-commercial use. The warrantor assumes no liability for property damage or any other incidental or consequential damage whatsoever which may result from failure of this product. Any and all warranties of merchantability and fitness implied by law are limited to the duration of the expressed warranty. All warranties apply only to VTL products purchased and used in the USA, and are only applicable within the USA. Products purchased outside the USA may not be registered for warranty with the factory in the USA, but may only be registered with the VTL distributor in the country of purchase. In the case of returns from outside the USA, the owner of the product returned is responsible for all shipping charges, and VTL will accept no shipping or customs duty charges for goods returned to the USA, nor any shipping or customs duty charges for the return of the product to the owner.

Some states do not allow limitations on how long an implied warranty lasts, so the above limitations may not apply to you. Some states do not allow the exclusion or limitation of incidental or consequential damages, so the above exclusion may not apply to you. This warranty gives you specific legal rights and you may also have other rights that vary from state to state.

Warranty Registration

Warranty registration for VTL products is valid in the USA only. International VTL customers should consult their local VTL dealer regarding product registration and warranty procedures.

To obtain valid US warranty service, please fill out the enclosed VTL Warranty Registration card and mail it to the following address with a **COPY OF YOUR ORIGINAL BILL OF SALE** within the first thirty days of purchase:

VTL Warranty Registration
4774 Murrieta Street, Suite 10
Chino, CA 91710
USA

To help you keep a record of the serial number and purchase information, please enter the following information into this manual.

Product Model Number: _____
Serial Number: _____
Purchase Date: _____
Authorized Dealer: _____

Service Notes

Date	Service	Initials
_____	_____	_____
_____	_____	_____
_____	_____	_____
_____	_____	_____
_____	_____	_____
_____	_____	_____