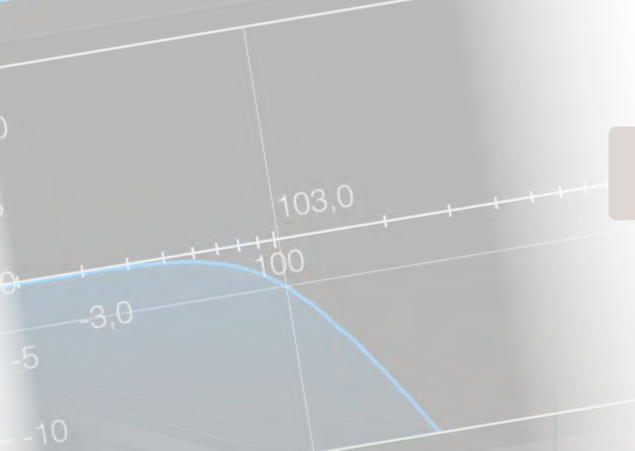
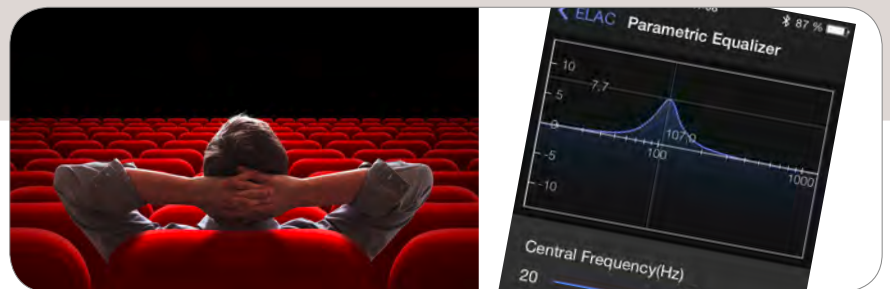


elekom.de 11:08 87%  
AC Low Pass



## Subwoofer with App-Control

High Performance Subwoofers  
SUB 2050, SUB 2070, SUB 2090



### Just how smart can a subwoofer be?

Surprisingly smart: An intuitive but comprehensive app-based control interface. Simply pair your iPhone®, iPad® or an Android® device with the new ELAC subwoofers and adjust the sound to your preferences. The ELAC app required can be downloaded free of charge.



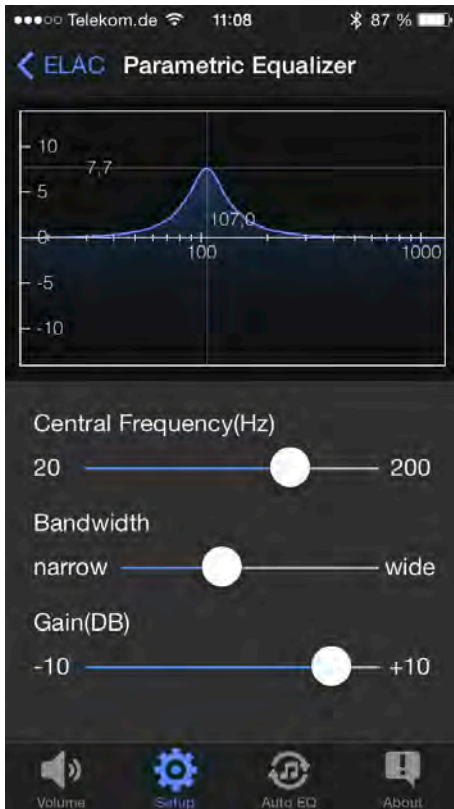
# Subwoofer with BLE control

Just how smart can a subwoofer be?

Surprisingly smart as it turns out from the two new models we are about to launch. What do they share in common? An intuitive but comprehensive app-based control interface. Simply pair your iPhone®, iPad® or an Android® device with the new ELAC subwoofers and adjust the sound to your preferences. The ELAC app required can be downloaded free of charge. Now what is really clever about the system is that there are no complicated network connections necessary as subwoofer and mobile device communicate directly via BLE (Bluetooth® Low Energy).

For users, this means no more fiddly adjustments at the rear of the subwoofer – for instance, if you want more bass for a movie evening, or if you want to avoid disturbing the neighbors at the dead of night. Four preset modes can be selected at the touch of a finger: Normal, Music, Cinema, and Night. Those who want to explore the possibilities of the app control system further will discover genuine pro-audio options such as a parametric equalizer, a low-pass filter, and individual settings for power-saving auto-on function. However, perhaps the most exciting option is the calibration function, which uses the microphone on your smartphone to listen to the volume, frequency response and sound reflections in the room before automatically optimizing the sound of your ELAC subwoofer.

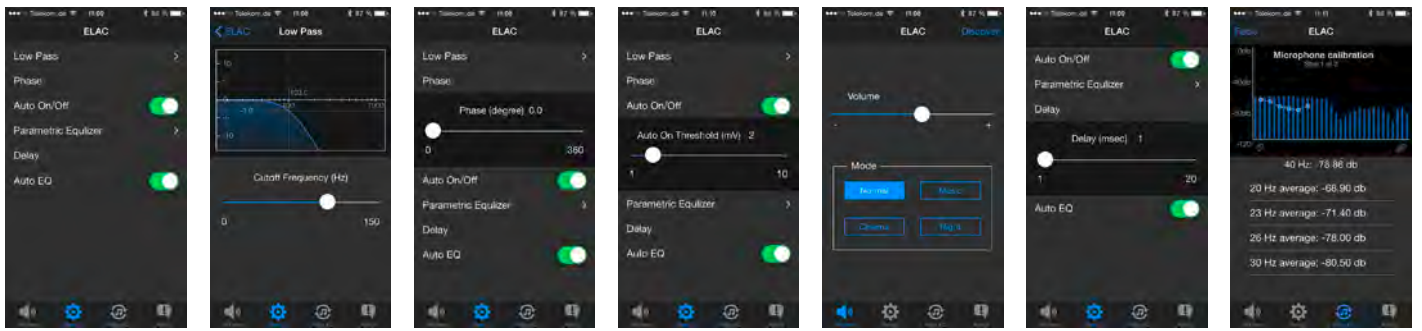
The new ELAC subwoofers can be connected directly using loudspeaker cables (left, center, right) or stereo RCA cables. In case of a SUB 2090 symmetrical wiring can be also used. And if you prefer to dispense with wires altogether, the new high-performance subwoofers are equipped with an ELAC Wireless Interface for wireless music transmission.



◀ **Push-Push / Pull-Pull**  
A look into the cut-off model of the SUB 2070 discloses the principle of two drivers, oppositely positioned but electrically driven in parallel. Thanks to this the acoustical performances of both drivers are added up, but the mechanical forces cancel each other. No mechanical vibrations will disturb the audio reproduction, the result is just pure sound.

▼ **ELAC Wireless Set Stereo**  
The Audio signal is transmitted losslessly (CD quality) from the transmitter to the receiver. Plug & Play through the accessory kit





▲ Sample screenshots from app "SUB Control"



### SUB 2050

Entering the world of APP-controlled subwoofers: the SUB 2050 is a compact, but nevertheless a very powerful subwoofer. The combination of a 300 mm woofer and a powerful 500 W BASH amplifier delivers an impressive reproduction of the lowest frequency range. Because of this it is the perfect completion for compact bookshelf and floor standing speakers in stereo or multichannel applications.

### SUB 2070

Even more than just a little bit more: the SUB 2070 is nearly the same size as the SUB 2050, but the internal structure is totally different. Thanks to the push-push/pull-pull principle with two 250 mm woofers oppositely positioned which are additional joined by the massive tension rod, the reproduction is musical and precise, due to no mechanical vibration. And, as the powerful BASH amplifier is able to deliver 600 W, the SUB 2070 offers a huge dynamic range.

### SUB 2090

A lot of everything: the working principles of SUB 2090 and SUB 2070 are identical, but the SUB 2090 offers just more in every issue. The two 300 mm woofers are driven by a state-of-the-art 1,200 W BASH amplifier. The performance is breathtaking: an extended frequency range meets a fantastic precision and a great potential in dynamics. In comparison to the other models the SUB 2090 offers symmetrical inputs and a special APP enables even more functionality to meet the perfect acoustics in every environment.

# THE „SUB CONTROL“ APP

Your ELAC subwoofer incorporates an advanced, digital control system. Analog rotary potentiometers and switches have been replaced by a digital signal processor (DSP), which allows you to adjust your subwoofer conveniently and accurately. All parameters, such as volume, cutoff frequency, phase etc., as well as the automatic calibration function, can be conveniently adjusted with the help of the free APP.

The digital control system also eliminates the possibility of unwanted changes to controls and settings.



Note: The APP used to control the subwoofer does not require any complicated connections to your home broadband (WLAN) network. The control system operates using Bluetooth® Low Energy (BLE).

Please go to the relevant source and download the “SUB CONTROL” APP required to control the subwoofer. For Apple® iPhone® and iPod® users, this is the Apple® App Store®. Android® users should visit the Google® Play Store®.

Enter “ELAC” or “SUB CONTROL” as a search term and look for the icon shown below.

Please note that your mobile device must support Bluetooth® Standard 4.0. This is the case for the majority of devices sold as of mid-2013. If necessary, check the accompanying documentation for your mobile device or contact the manufacturer’s support hotline.



▲ SUB 2090, Terminal

Technical Data	SUB 2050	SUB 2070	SUB 2090
Height x Width x Depth	440 x 380 x 380 mm	475 x 360 x 385 mm	533 x 420 x 420 mm
Weight	22 kg	32 kg	40 kg
Type	1-Way active, in closed box	1-Way active, 2 woofers in closed box	1-Way active, 2 woofers in closed box
Woofer	1 x 300 mm, AS cone	2 x 250 mm, AS cone	2 x 300 mm, AS cone
Upper cutoff frequency	40 to 150 Hz	40 to 150 Hz	40 to 150 Hz
Frequency range (IEC 268-5)	19 to 180 Hz	18 to 180 Hz	17 to 150 Hz
Maximum amplifier power	500 W	600 W	1.200 W
Finishes	Black and White High Gloss	Black and White High Gloss	Black High Gloss
Accessories included in delivery	Free App BLE-Control for iOS®7 and Android®4	Free App BLE-Control for iOS®7 and Android®4	Free App BLE-Control for iOS®7 and Android®4
Optional accessories	ELAC Wireless Stereo Set	ELAC Wireless Stereo Set	ELAC Wireless Stereo Set

*Errors and omissions excepted. Specifications and design features subject to change without notice.*

Apple®, App Store®, iOS™ and iPhone™ are registered trademarks of Cisco Systems, Inc., USA, licensed to Apple Inc., USA.  
Google®, PlayStore®, Android™ is a registered trademark of Google Inc., USA.  
Bluetooth™ is a registered trademark of Bluetooth Special Interest Group, USA.



ELAC Electroacoustic GmbH  
Rendsburger Landstraße 215 • 24113 Kiel • Germany  
Phone +49-431-64774-0 • [www.elac.com](http://www.elac.com)